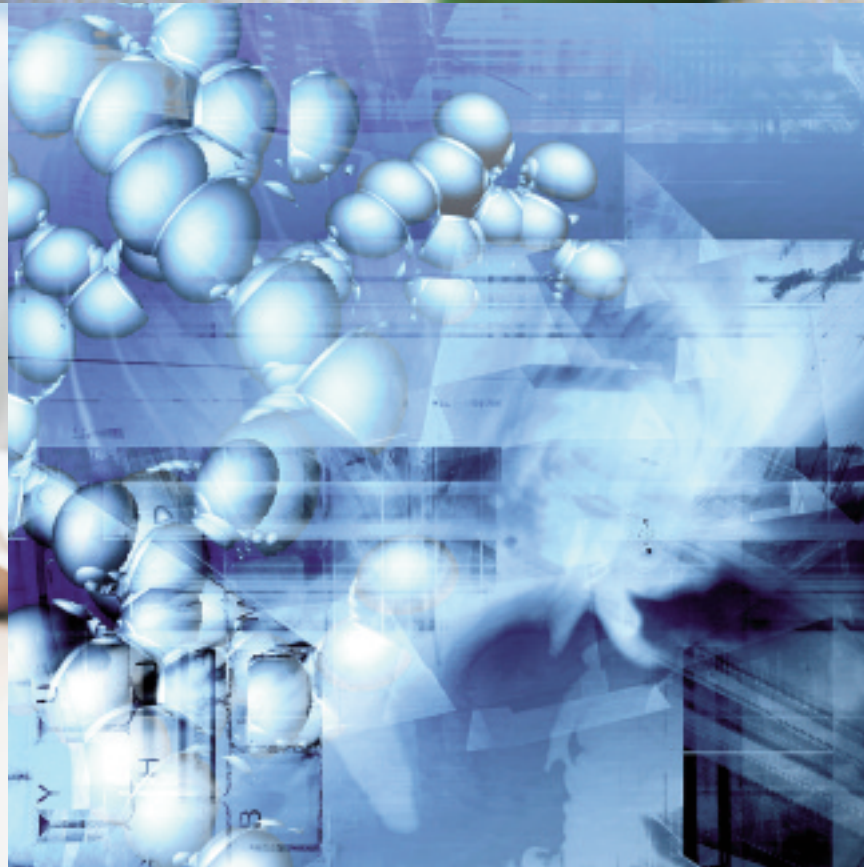
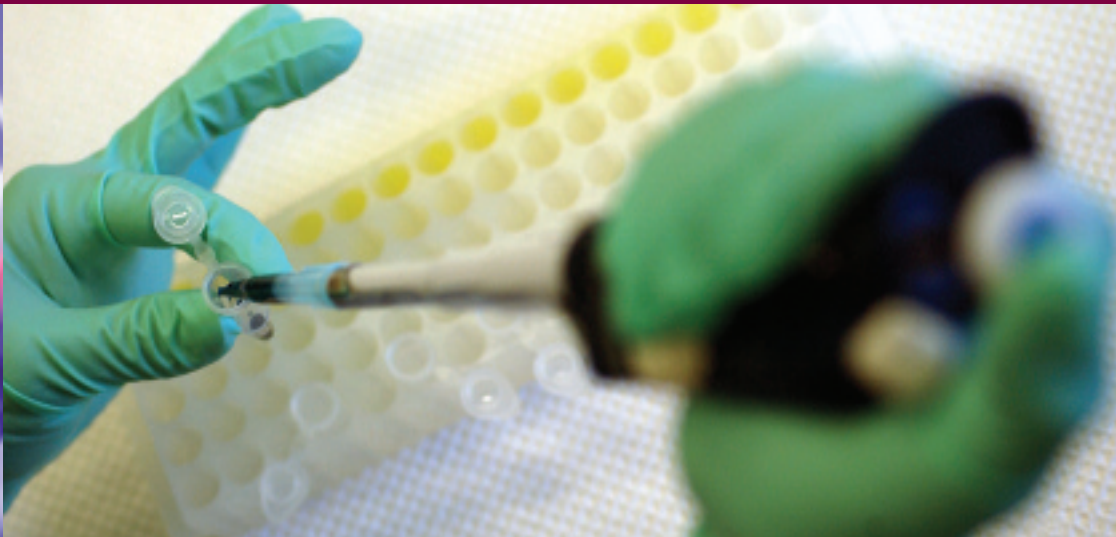


Health Network  
LABORATORIES

INFECTIOUS DISEASE TESTING



# WE DELIVER THE LATEST IN MOL

**H**ealth Network Laboratories offers a wide range of molecular tests for respiratory and pulmonary disorders, vector borne diseases, encephalitis/meningitis, herpesvirus, polyomavirus, viral hepatitis, retrovirus, and sexually transmitted diseases. If you are looking for the latest in molecular testing, fast and courteous courier service, excellent client service, fast turnaround times and accurate results, look no further than Health Network Laboratories.

A summary of the Herpesvirus and Viral Hepatitis tests offered by Health Network Laboratories follows. For a more complete menu of our test offerings, see the chart on the following page. For more information relating to sexually transmitted disease testing and other tests associated with women's health, ask your representative for our Women's Health brochure or call us at (877) 402-4221.

## Herpesvirus Infection

One of the more common sexually transmitted diseases is genital herpes. It is estimated that 22% of the adult US population is infected with HSV Type 2 and 90% of those infected don't know it. Health Network Laboratories offers its customers both the antibody assay using HerpeSelect® as well as the culture method using ELVIS (Enzyme Linked Viral Inducible System).

HerpeSelect® is the number one type-specific HSV antibody test in the world and is referenced by both ACOG and the CDC for HSV-1 and HSV-2 antibody testing. The ELVIS assay is a culture based system using the power of enzymatic detection of Herpes simplex. In the ELVIS assay, Herpes simplex viruses insert their genetic material into an engineered cell culture which allows expression of an enzyme only when the cell is infected with HSV.

In addition to the tests for HSV, Health Network Laboratories offers state-of-the-art testing for other Herpesvirus infections including Cytomegalovirus (CMV), Epstein Barr Virus (EBV) and Varicella-Zoster Virus (VZV).

## Viral Hepatitis

Health Network Laboratories also provides its customers with a comprehensive menu of molecular hepatitis testing including:

- **Hepatitis B Virus (HBV) DNA Viral Load** assay.
- **Hepatitis C Genotype** testing is based on reverse transcription of genomic HCV RNA in the sample followed by PCR amplification and hybridization of the amplified material to oligonucleotide.
- **Hepatitis C Qualitative RT-PCR**, an *in vitro* diagnostic, nucleic-acid amplification test for qualitative detection of HCV RNA in human serum or plasma.
- **Hepatitis C Viral Load RT-PCR**, a highly sensitive method which can be used to accurately quantitate HCV RNA, and therefore, viral load in clinical serum specimens.

# MOLECULAR TESTING... AND MORE.

Health Network Laboratories' exhaustive menu of infectious disease tests includes the following:

## DIAGNOSTIC CATEGORY/

### PRIMARY DISEASE AGENT

### TEST OFFERED

#### **Respiratory/Pulmonary**

Bordetella pertussis/parapertussis

Bordetella PCR

Mycobacterium tuberculosis Complex/

Mycobacterial Culture identification, DNA Probe

Mycobacterium avium Complex

---

#### **Vector Borne Diseases**

Borrelia burgdorferi (Lyme Disease)

Lyme, Western Blot

Lyme, PCR Blood

Lyme, PCR, Cerebrospinal Fluid

---

#### **Encephalitis/Meningitis**

Enterovirus

Enterovirus, PCR, Cerebrospinal Fluid

---

#### **Herpesvirus Infection**

Cytomegalovirus (CMV)

Cytomegalovirus DNA, Rapid PCR, Plasma

Cytomegalovirus, PCR, Cerebrospinal Fluid

Epstein Barr Virus (EBV)

Epstein-Barr Virus, PCR, Cerebrospinal Fluid

Herpes simplex Virus (HSV)

HerpeSelect®

ELVIS (Enzyme Linked Viral Inducible System) HSV Test

Herpes Simplex Virus, PCR, Cerebrospinal Fluid

Varicella-Zoster Virus (VZV)

Varicella-Zoster Virus, PCR, Cerebrospinal Fluid

---

#### **Polyomavirus Infection**

BK Virus

BK Virus, PCR, Blood or Urine

---

#### **Viral Hepatitis**

Hepatitis B Virus (HBV)

Hepatitis B DNA, Viral Load

Hepatitis C Virus (HCV)

Hepatitis C Genotype

Hepatitis C, Qualitative, RT-PCR

Hepatitis C Viral Load, RT-PCR

---

#### **Retrovirus Infection**

HIV-1

HIV-1, PCR, Qualitative

HIV-1 Genotype

HIV-1 Phenotype

HIV-1 Viral Load, RT-PCR

HIV-1 Virtual Phenotype

---

#### **Sexually Transmitted Diseases**

Chlamydia

Chlamydia trachomatis – Amplified DNA Probe

Cervical Cancer

Cytopathology, Cervical/Vaginal w/ Reflex HPV DNA

Cytopathology, HPV DNA Only

Gonorrhea

Neisseria gonorrhoeae Amplified DNA Probe

Vaginitis

Vaginitis DNA Probe includes Candida, Trichomonas, and

Gardnerella

---

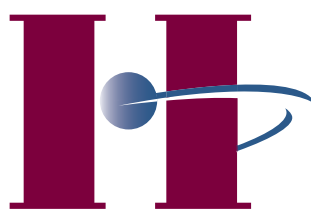
# OUR COMMITMENT IS TO QUALITY AND PERSONALIZED SERVICE IN EVERYTHING WE DO.

## Our Mission

Health Network Laboratories strives to continually provide high-quality, courteous, and responsive service to our customers. Our dedicated professionals ensure accurate, expert, cost-effective, and timely clinical information for the treatment and medical management of patients.

## Who We Are

Based in Allentown, Pennsylvania, Health Network Laboratories is a multiregional medical laboratory with facilities in Pennsylvania and New Jersey. Health Network Laboratories serves the needs of the public and health care communities performing more than three million clinical and pathology tests each year. We offer a full complement of clinical laboratory and anatomic pathology services, including highly specialized esoteric testing to hospitals, physicians, long-term care facilities, assisted-living facilities, industrial/commercial businesses, as well as government agencies.



**Health Network**  
LABORATORIES

2024 LEHIGH STREET • ALLENTOWN, PA 18103-4798  
TOLL FREE: (877) 402-4221 • (610) 402-8170 • FAX (610) 402-5592  
[www.healthnetworklabs.com](http://www.healthnetworklabs.com)

Health Network Laboratories is an Equal Opportunity Employer